

Ext/Int Events and Influences

Trigger :
· A loan requires the movement of a group of objects to another institution

Process

Movement – Packaging and Transport

Documents

Legal Indemnity

Budget, Finance

Time dependencies

Owner, exhibition, loan, care, acquisition

Political and institutional influence

Risk Assessment Schedule

Treatment

Photography

Change in circumstance – internal and political

Non movement schedules

Requirements to change location of object

Risk assessment phase

Location to which object is going

Object condition / materials

Assessment of existing documentation

Resource recommendations

Research

Scheduling and resource availability

Decision?

Pre Transport implementation, preparation and scheduling

Condition Assessment

Implement Transportation agreements and requirements from risk assessment

Ready?

Go

Updating documentation

Insurance

Ordering equipment, material invoices

Work requests

Condition Report

Reconfirming documentation

No

No

Yes

Yes

Packing and Transport: Discussion Summary

Green = process

Red = output

Yellow = influences

A decision has been made to move an object.

Risk assessment phase

- happen in parallel
- not sequentially which will inform a decision from a conservation perspective

If decision is we can't move it

- need to review the risk assessment

If decision is too move it

- we go into scheduling and implementation process which may or may not involve treatment

Outside influences and context may change and all bets still might be off

Various outputs:

- updating data
- reconfirming data
- ordering equipment material contractors
- may involve links with other databases (finance, budget control),
- scheduling—you might treat, crate

Finally you get to move it

- it might be in the institution
- external to the institution

Time frame could be minutes to years, what is critical there is an ongoing updating of location

Quite often there is a sub-set of moves in risk assessment

Just like the treatment, it's probably useful to have some kind of materials and instructions (as a resource to feed in and be made available during process)

Link to registrar functions for insurance/indemnity.

BPMN Movement – Packing and Transport

Documents

Ext/Int Events and Influences

Trigger :
 · A loan requires the movement of a group of objects to another institution
 · Conservation
 · Photography

Legal Indemnity

Budget, Finance

Time dependencies

Owner, exhibition, loan, care, acquisition

Political and institutional influence

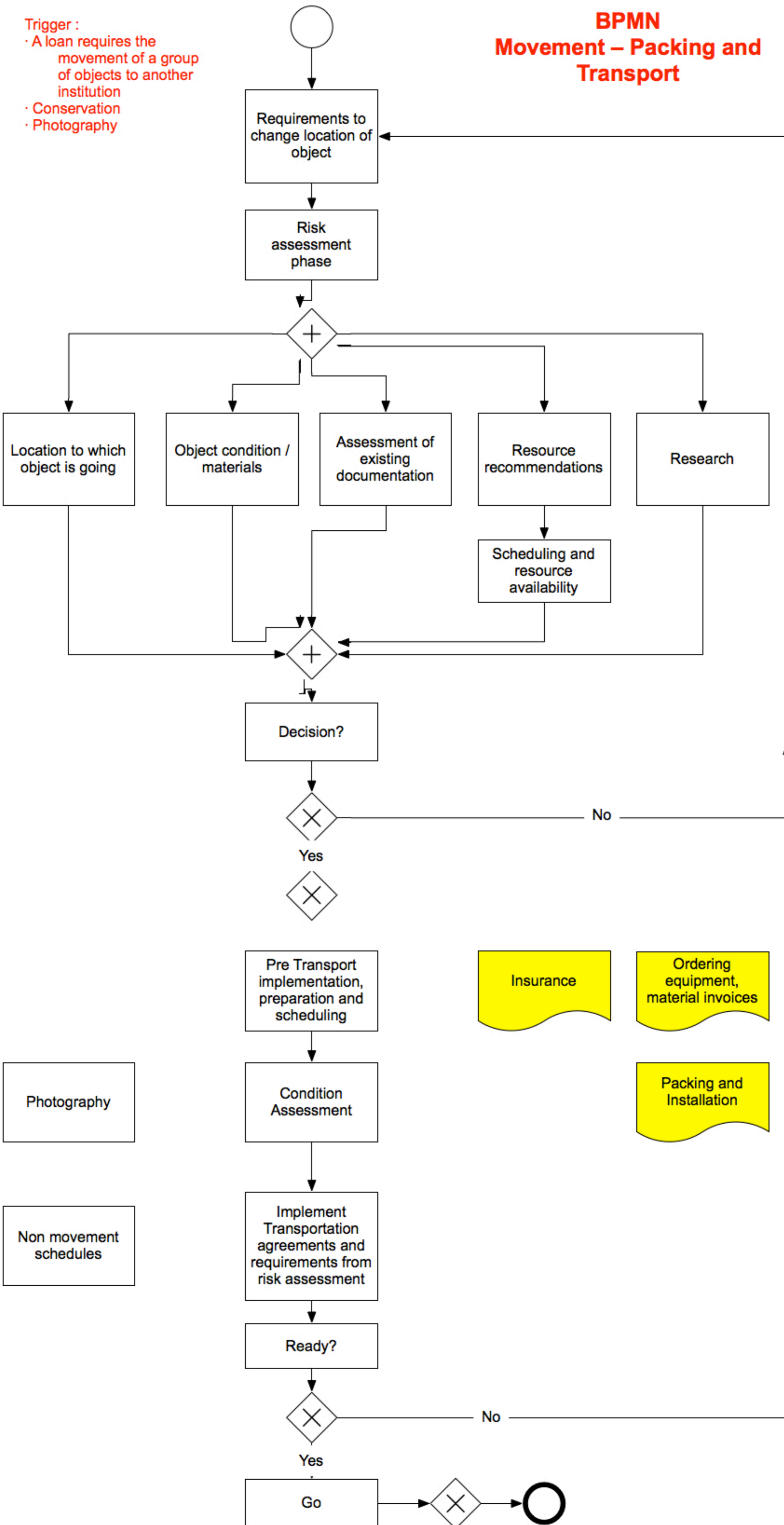
Risk Assessment Schedule

Treatment

Photography

Change in circumstance – internal and political

Non movement schedules



Updating documentation

Insurance

Ordering equipment, material invoices

Work requests

Packing and Installation

Condition Report

Reconfirming documentation