

Ext/Int Events and Influences

Trigger Examples:
- Repatriation (eg sample)
- Authentication

Process

Analysis

Documents

Permission of Possession (Valid Receipt and Authorisation)

Proposal for Analysis from outside person (Conservator, Curator)

Transfer of Custody Document (Paper)

Request Process - Word doc, printed

Decision on level of Process

Problem, Feasibility, Scheduling

Involving Curator, Conservator, Scientist

Phone, Email, Discussion + Paper Form

Decision on type of process And level of intervention

Budget Request and Approval

Approval Memorandum of Understanding

Analysis which does not need approval or budget (Non invasive, destructive?)

Outside Budget requests - Report .doc, pdf email

loop

Movement

Possible

End decisions

Possible

Consulting previous documentation, potential expert opinion.

Analysis

Conservator, Scientist generated

Digital(raw or jpeg). Xray film, Dicom, UV, Infra Red. Instrument specific files. (Meta data described csv, INCA software remoting tool) Reference information

Data Acquisition

Data Evaluation and Interpretation

INPUT vendor specific documentation eg C14. HardCopy

Technical Report

Needs ? Treatment, check on prev analysis

Tech analysis report, doc, pdf, image, (audience dependant)

loop

Treatment

Acquisition

Movement

?

Further or Other?

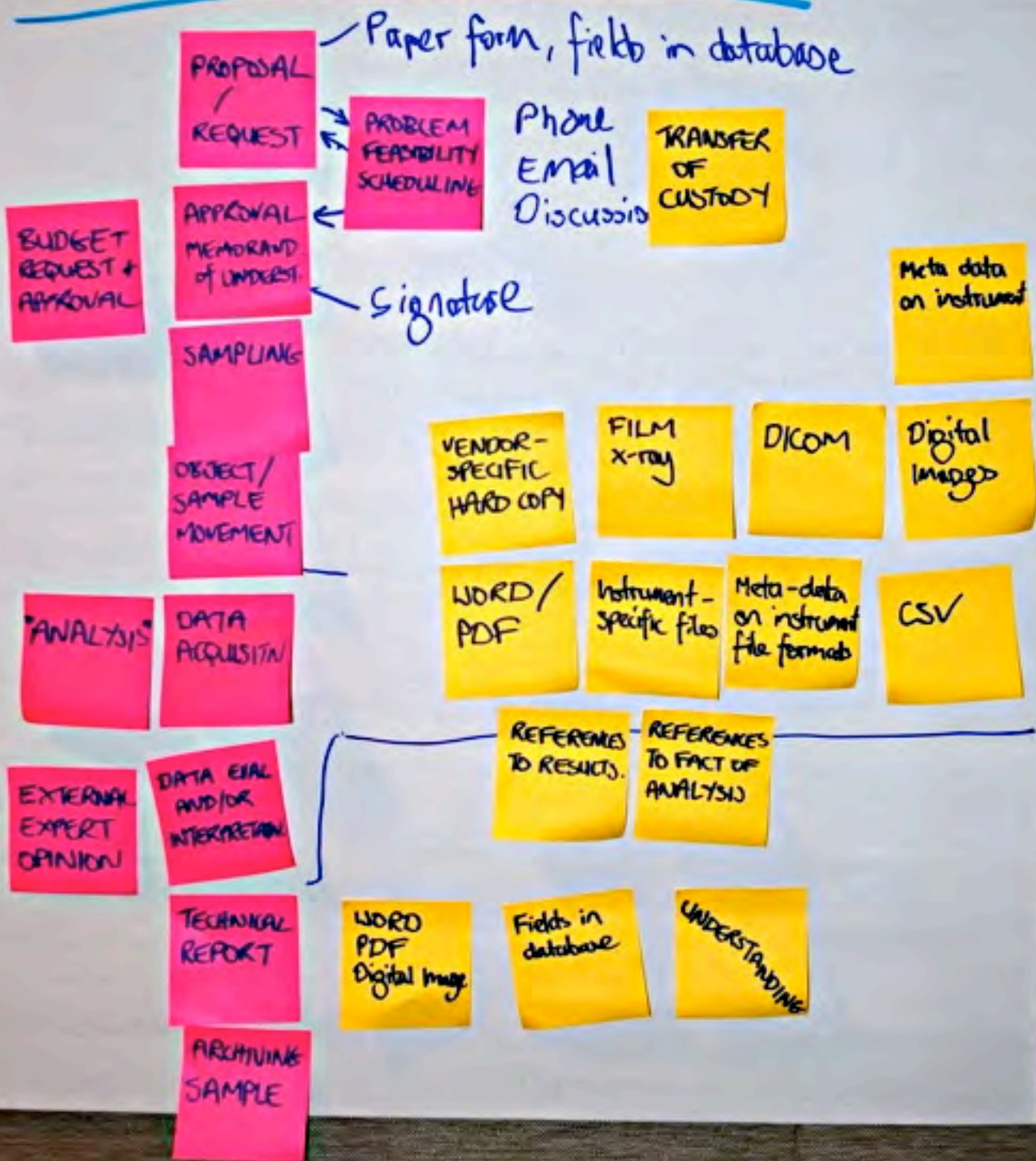
Linked to Acquisition Number universal - but not centrally stored.

Archive

Database or spreadsheet entry?

ANALYSIS

Pink = Process
Yellow = Output



Analysis: Discussion Summary

Proposal, request, feasibility might or might not be necessary – or you might have to go through a process, there will be some type of paper form that gets filled out, phone, emails, discussions in the hall, may need to be controlled by conversations

You may need to move an object –there will be some type of documentation for this

Once you are through the process you may need to do sampling

Having decided what we are going to sample, how, who

Data acquisition phase (film, images, x-ray images, straight digital pictures, visible or u.v, instrument specific file formats, may maintain metadata, may also maintain metadata on the instrument)

Interpretation of data (spread sheets, lots of types, or might think of it inside your head, which is hard to capture)

An external expert may come in at this point and this will also generate references to the results and the analyses (typically a printed document of some kind)

At the end of this process there will be some kind of technical report archived to a file or data fields and some sort of understanding will be achieved

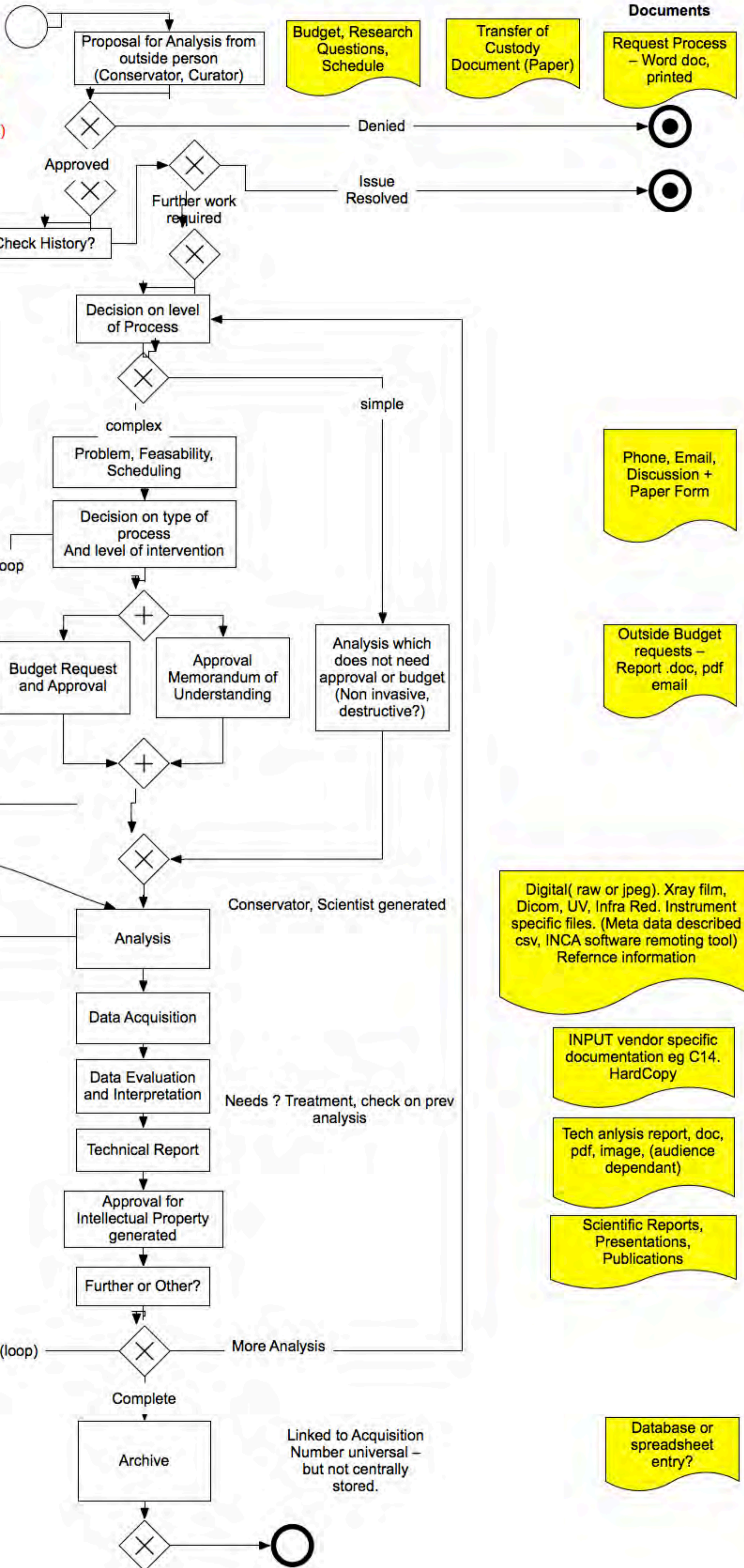
At the end of this process is the re-integrating of the object and the archiving of the sample.

The reception of samples: hot button issues include 1. possession and recording of samples and 2. authorization of samples, valid receipt, authorization, and 3. documentation of agreements of repatriation of samples after the analysis (destructive or non-destructive). For example: In UK if you are exporting a sample you are exporting part of the actual cultural object.

BPMN Analysis

Trigger Examples:
· Repatriation (eg sample)
· Authentication

Permission of Possession (Valid Receipt and Authorisation)



Budget, Research Questions, Schedule

Transfer of Custody Document (Paper)

Request Process - Word doc, printed

Denied

Issue Resolved

Check History?

Approved

Further work required

Decision on level of Process

complex

Problem, Feasibility, Scheduling

Decision on type of process And level of intervention

simple

Analysis which does not need approval or budget (Non invasive, destructive?)

Budget Request and Approval

Approval Memorandum of Understanding

Phone, Email, Discussion + Paper Form

Outside Budget requests - Report .doc, pdf email

Involving Curator, Conservator, Scientist

Consulting previous documentation, potential expert opinion.

Movement

Possible entry point (private practice)

Conservator, Scientist generated

Digital(raw or jpeg). Xray film, Dicom, UV, Infra Red. Instrument specific files. (Meta data described csv, INCA software remoting tool) Reference information

INPUT vendor specific documentation eg C14. HardCopy

Tech analysis report, doc, pdf, image, (audience dependant)

Scientific Reports, Presentations, Publications

Treatment

Acquisition

Movement

?

Needs ? Treatment, check on prev analysis

More Analysis

Complete

Linked to Acquisition Number universal - but not centrally stored.

Database or spreadsheet entry?